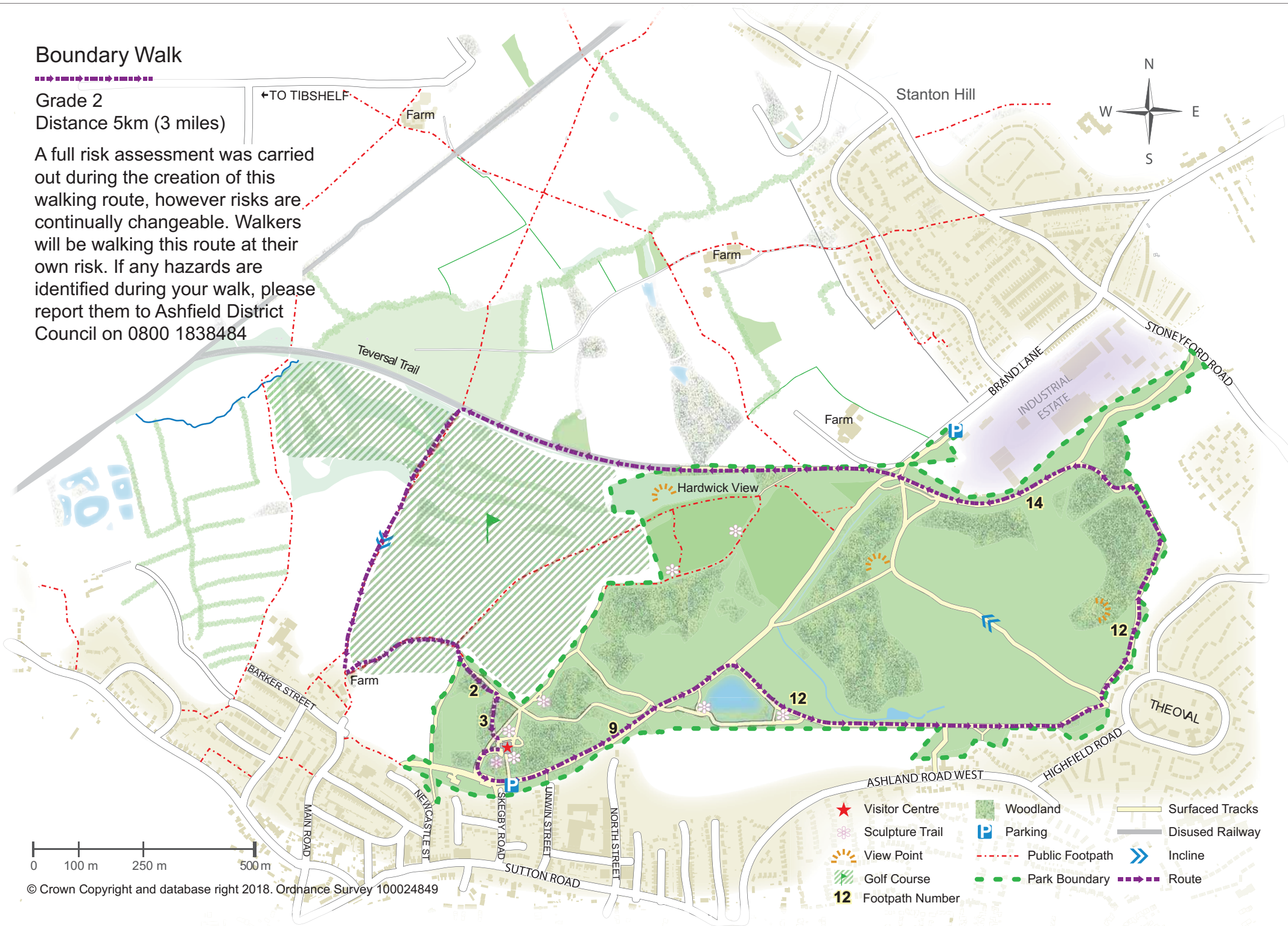


# Boundary Walk

Grade 2  
Distance 5km (3 miles)

A full risk assessment was carried out during the creation of this walking route, however risks are continually changeable. Walkers will be walking this route at their own risk. If any hazards are identified during your walk, please report them to Ashfield District Council on 0800 1838484



- ★ Visitor Centre
- ✿ Sculpture Trail
- View Point
- Golf Course
- 12** Footpath Number
- Woodland
- Parking
- Public Footpath
- Park Boundary
- Surfaced Tracks
- Disused Railway
- Incline
- Route





## Boundary Walk

### Grade 2 Walk from Brierley Forest Park Visitor Centre

**Distance:** 5km / 3 miles

**Following Footpath Numbers:** 9, 12, 14, 2, 3

This is a slightly challenging medium length walk. It includes gentle inclines, descends, and passes through a steel kissing gate.

As implied by the name, this walk covers the outer boundary of Brierley Forest Park taking in the beautiful woodland, parkland and meadows. It includes part of the sculpture trail, the play trail, and the wildlife around Brierley fishing pond. This walk rewards walkers with stunning views across the countryside to Hardwick Hall in Derbyshire, the magnificent Elizabethan country home of Bess of Hardwick.

Like all of the walks there are plenty of seats along the route to take a well-earned rest whilst enjoying the stunning views, the local flora and fauna and the peace and tranquillity of Brierley Forest Park.